

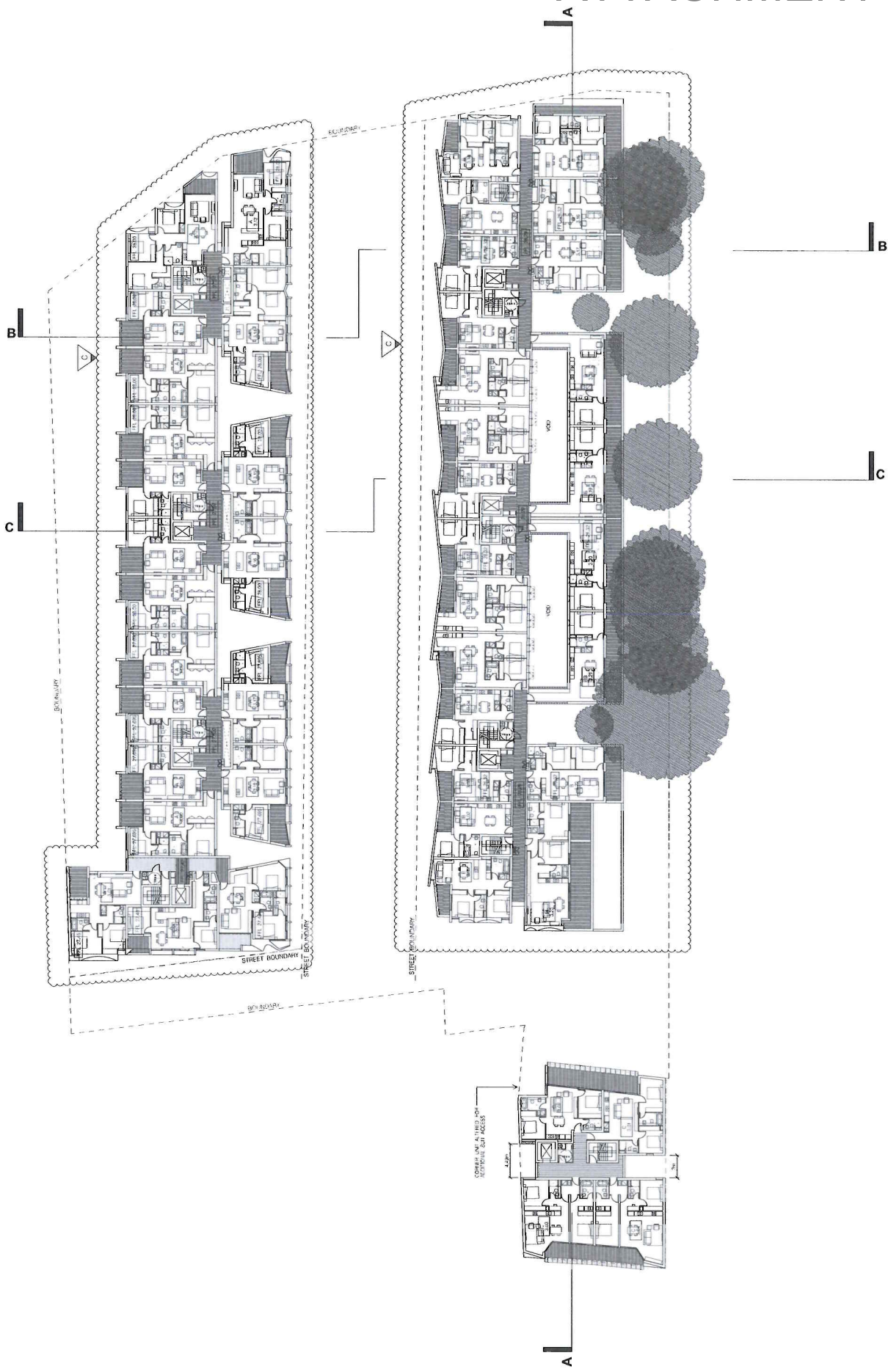
ATTACHMENT A

ATTACHMENT A

SELECTED DRAWINGS

511-515 BOTANY ROAD, ZETLAND

ATTACHMENT A



PROJECT	LEVEL 3 FLOOR PLAN
DATE	4/25/20
REVISION	C
ISSUE	DA - 1106

OWNER	51-615 BOTANY ROAD, ZETLAND
CLIENT	LATERAL CORPORATION
PROJECT NO.	1106
DATE	4/25/20
SCALE	AS SHOWN
PROJECT NO.	1106
DATE	4/25/20
SCALE	AS SHOWN

ARCHITECT	LANDSCAPE ASSOCIATES
ARCHITECT	1100 W. 10TH ST. SUITE 1000
ARCHITECT	MINNEAPOLIS, MN 55404
ARCHITECT	TEL: 612.338.1100
ARCHITECT	FAX: 612.338.1101
ARCHITECT	WWW.LANDSCAPEASSOCIATES.COM

PLANNING	SUB
PLANNING	1100 W. 10TH ST. SUITE 1000
PLANNING	MINNEAPOLIS, MN 55404
PLANNING	TEL: 612.338.1100
PLANNING	FAX: 612.338.1101
PLANNING	WWW.LANDSCAPEASSOCIATES.COM

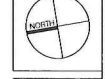
LANDSCAPE	STURT NOBLE
LANDSCAPE	1100 W. 10TH ST. SUITE 1000
LANDSCAPE	MINNEAPOLIS, MN 55404
LANDSCAPE	TEL: 612.338.1100
LANDSCAPE	FAX: 612.338.1101
LANDSCAPE	WWW.LANDSCAPEASSOCIATES.COM

ARCHITECT	BLACKETT MAGUIRE AND GOLDSMITH
ARCHITECT	2000 W. 10TH ST. SUITE 1000
ARCHITECT	MINNEAPOLIS, MN 55404
ARCHITECT	TEL: 612.338.1100
ARCHITECT	FAX: 612.338.1101
ARCHITECT	WWW.LANDSCAPEASSOCIATES.COM

ARCHITECT	TRANSPORT AND TRAFFIC PLANNING
ARCHITECT	1100 W. 10TH ST. SUITE 1000
ARCHITECT	MINNEAPOLIS, MN 55404
ARCHITECT	TEL: 612.338.1100
ARCHITECT	FAX: 612.338.1101
ARCHITECT	WWW.LANDSCAPEASSOCIATES.COM

ARCHITECT	NORTHROP
ARCHITECT	1100 W. 10TH ST. SUITE 1000
ARCHITECT	MINNEAPOLIS, MN 55404
ARCHITECT	TEL: 612.338.1100
ARCHITECT	FAX: 612.338.1101
ARCHITECT	WWW.LANDSCAPEASSOCIATES.COM

ARCHITECT	ACOUSTIC LOGIC
ARCHITECT	1100 W. 10TH ST. SUITE 1000
ARCHITECT	MINNEAPOLIS, MN 55404
ARCHITECT	TEL: 612.338.1100
ARCHITECT	FAX: 612.338.1101
ARCHITECT	WWW.LANDSCAPEASSOCIATES.COM

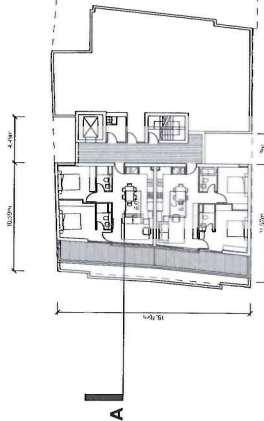
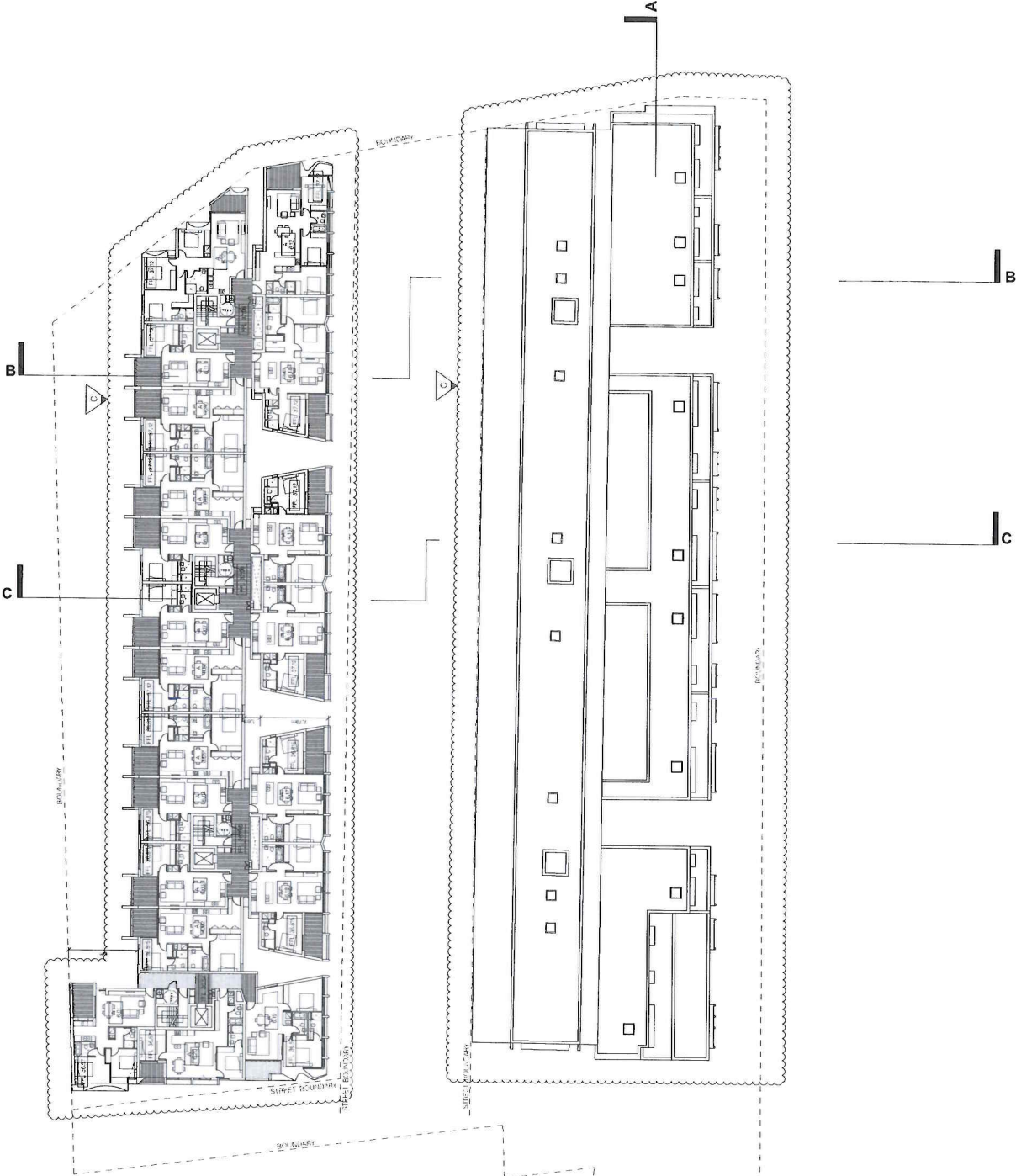


COPYRIGHT
 Copyright © 2020 by Lateral Corporation. All rights reserved. This drawing is the property of Lateral Corporation and is not to be reproduced, stored in a retrieval system, or transmitted in any form or by any means, electronic, mechanical, photocopying, recording, or by any information storage and retrieval system, without the prior written permission of Lateral Corporation.

DATE	4/25/20
BY	DAVID A. BROWN
FOR	DAVID A. BROWN

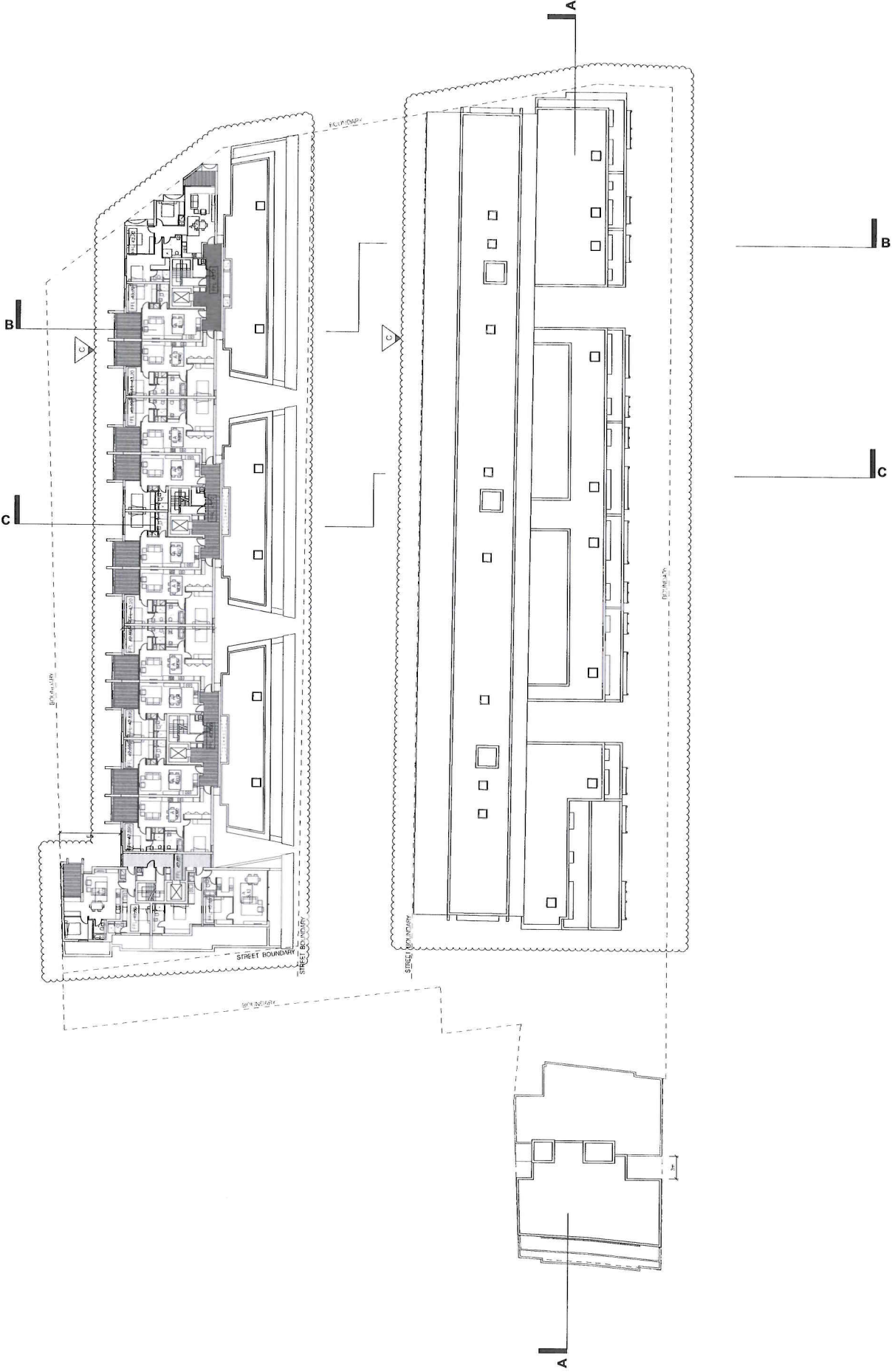
FOR DAVID BROWN'S USE ONLY
 NOT FOR CONSTRUCTION

ATTACHMENT A



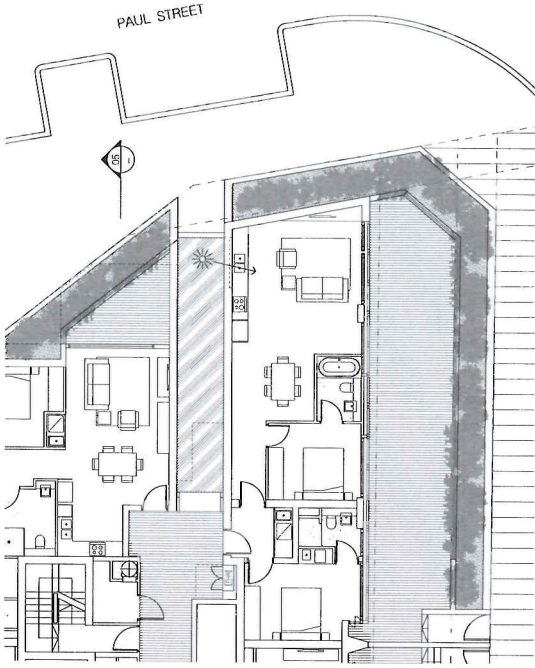
FOR ALL REFERENCES, SEE SHEET 100-1109 NOT FOR CONSTRUCTION	DRAWING NO. DA-1109 SHEET NO. 607 TOTAL SHEETS 608
	PROJECT: 51-55 BOTANY ROAD, ZETLAND CLIENT: LATERAL CORPORATION SCALE: 1/8" = 1'-0" DATE: 11/11/14 DRAWN BY: J. W. WILSON CHECKED BY: J. W. WILSON APPROVED BY: J. W. WILSON
PROJECT: LATERAL CORPORATION LEVEL: 6 (2nd FLOOR) DATE: 11/11/14 DRAWN BY: J. W. WILSON CHECKED BY: J. W. WILSON APPROVED BY: J. W. WILSON	DRAWING NO. DA-1109 SHEET NO. 607 TOTAL SHEETS 608
PLANNING: S.B. LEVEL: 6 (2nd FLOOR) DATE: 11/11/14 DRAWN BY: J. W. WILSON CHECKED BY: J. W. WILSON APPROVED BY: J. W. WILSON	DRAWING NO. DA-1109 SHEET NO. 607 TOTAL SHEETS 608
LANDSCAPE: STURTT NOBLE SCALE: 1/4" = 1'-0" DATE: 11/11/14 DRAWN BY: J. W. WILSON CHECKED BY: J. W. WILSON APPROVED BY: J. W. WILSON	DRAWING NO. DA-1109 SHEET NO. 607 TOTAL SHEETS 608
ARCHITECT: MESSERLEURS SCALE: 1/8" = 1'-0" DATE: 11/11/14 DRAWN BY: J. W. WILSON CHECKED BY: J. W. WILSON APPROVED BY: J. W. WILSON	DRAWING NO. DA-1109 SHEET NO. 607 TOTAL SHEETS 608
TRAFFIC AND TRAFFIC PLANNING: G. J. WILSON SCALE: 1/8" = 1'-0" DATE: 11/11/14 DRAWN BY: J. W. WILSON CHECKED BY: J. W. WILSON APPROVED BY: J. W. WILSON	DRAWING NO. DA-1109 SHEET NO. 607 TOTAL SHEETS 608
CIVIL AND STRUCTURAL: NORTHROP SCALE: 1/8" = 1'-0" DATE: 11/11/14 DRAWN BY: J. W. WILSON CHECKED BY: J. W. WILSON APPROVED BY: J. W. WILSON	DRAWING NO. DA-1109 SHEET NO. 607 TOTAL SHEETS 608
ACOUSTIC: ACOUSTIC LOGIC SCALE: 1/8" = 1'-0" DATE: 11/11/14 DRAWN BY: J. W. WILSON CHECKED BY: J. W. WILSON APPROVED BY: J. W. WILSON	DRAWING NO. DA-1109 SHEET NO. 607 TOTAL SHEETS 608
NORTH 	DRAWING NO. DA-1109 SHEET NO. 607 TOTAL SHEETS 608
COPYRIGHT © 2014 LATERAL CORPORATION ALL RIGHTS RESERVED NO PART OF THIS DOCUMENT MAY BE REPRODUCED OR TRANSMITTED IN ANY FORM OR BY ANY MEANS, ELECTRONIC OR MECHANICAL, INCLUDING PHOTOCOPYING, RECORDING, OR BY ANY INFORMATION STORAGE AND RETRIEVAL SYSTEM, WITHOUT PERMISSION IN WRITING FROM LATERAL CORPORATION.	DRAWING NO. DA-1109 SHEET NO. 607 TOTAL SHEETS 608

ATTACHMENT A

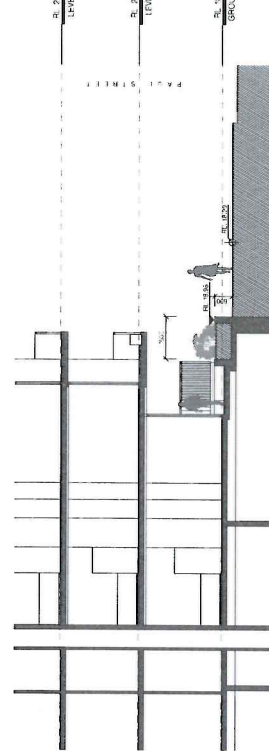


NOT FOR CONSTRUCTION THIS DRAWING IS THE PROPERTY OF THE ARCHITECT AND IS NOT TO BE REPRODUCED OR COPIED IN ANY MANNER WITHOUT THE WRITTEN PERMISSION OF THE ARCHITECT.	PROJECT: STUBBS BOTANY ROAD, ZETLAND ARCHITECT: GARDNER WHARF ASSOCIATES LATERAL CORPORATION SCALE: 1/8" = 1'-0" DATE: 11/17/2011 DRAWN BY: J. J. JONES CHECKED BY: J. J. JONES APPROVED BY: J. J. JONES	SHEET NO. 57 OF 59 DRAWING NO. DA - 1111 DATE: 11/17/2011
	ARCHITECT: GARDNER WHARF ASSOCIATES LATERAL CORPORATION 1000 WEST 10TH AVENUE, SUITE 100 DENVER, CO 80202 TEL: 303.733.1111 FAX: 303.733.1112 WWW: GWA.COM	PLANNING: SJB DESIGN: JERRY OWEN, STREET 1100 10TH AVENUE, SUITE 100 DENVER, CO 80202 TEL: 303.733.1111 FAX: 303.733.1112 WWW: GWA.COM
SO: SACKETT, MAGUIRE AND GOLDSMITH 2415 17TH AVENUE, SUITE 300 DENVER, CO 80202 TEL: 303.733.1111 FAX: 303.733.1112 WWW: GWA.COM	TRAFFIC: TRANSPORT AND TRAFFIC PLANNING 2415 17TH AVENUE, SUITE 300 DENVER, CO 80202 TEL: 303.733.1111 FAX: 303.733.1112 WWW: GWA.COM	CIVIL AND ENVIRONMENTAL: NORTHROP 2415 17TH AVENUE, SUITE 300 DENVER, CO 80202 TEL: 303.733.1111 FAX: 303.733.1112 WWW: GWA.COM
ACUSTIC: ACOUSTIC LOGIC 2415 17TH AVENUE, SUITE 300 DENVER, CO 80202 TEL: 303.733.1111 FAX: 303.733.1112 WWW: GWA.COM	NORTH	COPYRIGHT © 2011 GARDNER WHARF ASSOCIATES, LATERAL CORPORATION ALL RIGHTS RESERVED. NO PART OF THIS DRAWING IS TO BE REPRODUCED OR COPIED IN ANY MANNER WITHOUT THE WRITTEN PERMISSION OF THE ARCHITECT.

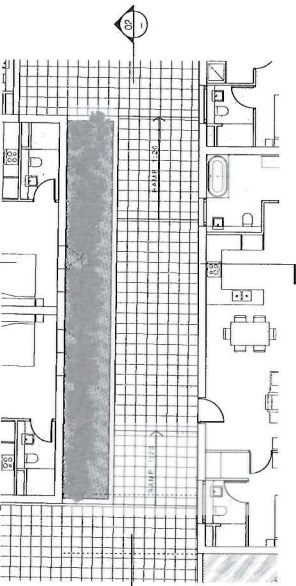
ATTACHMENT A



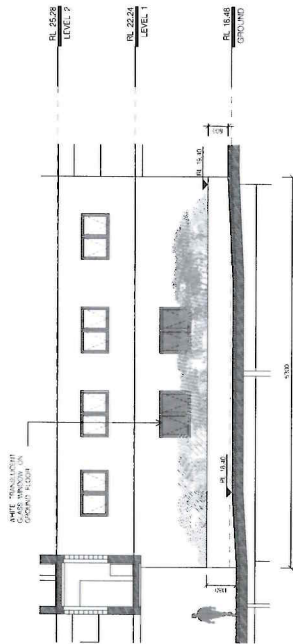
04 GROUND FLOOR PLAN (BLD A) - PART
1/16" = 1'-0"



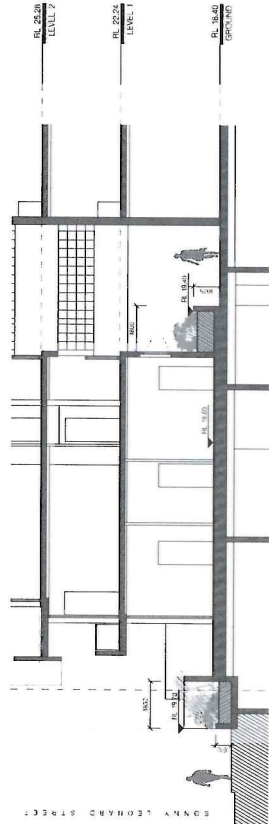
05 SECTION E (BLD A) - PART
1/16" = 1'-0"



01 GROUND FLOOR PLAN (BLD B) - PART
1/16" = 1'-0"



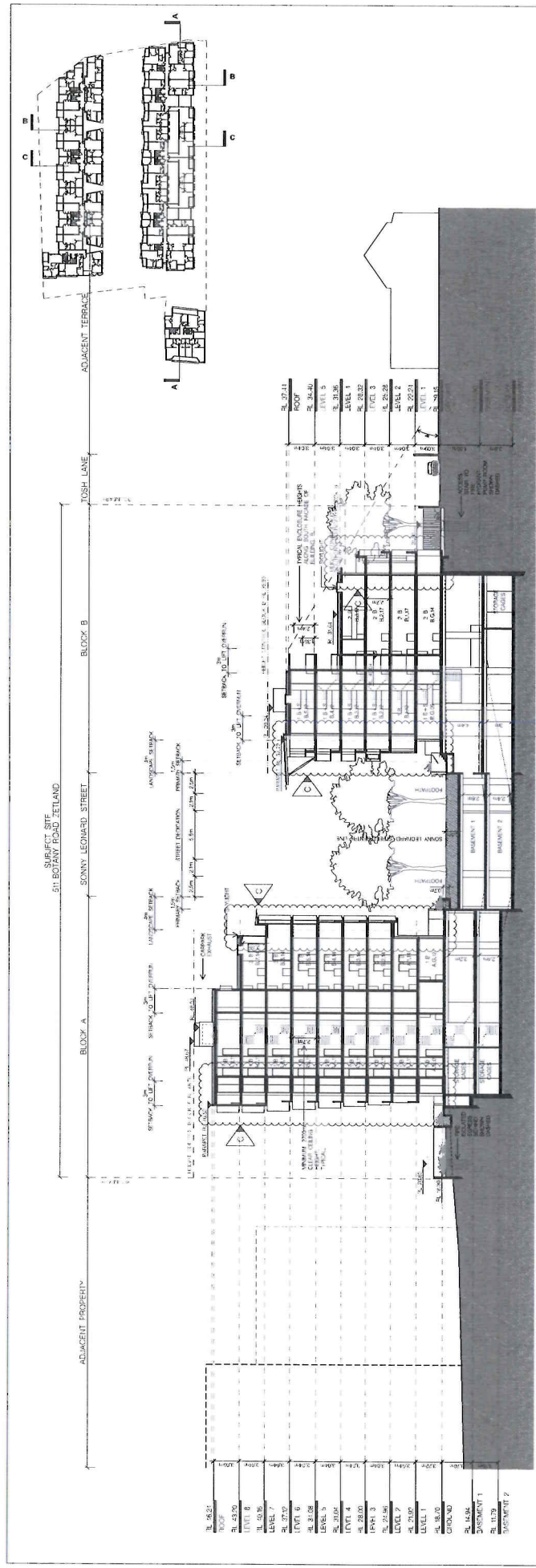
02 SECTION A (BLD B) - PART
1/16" = 1'-0"



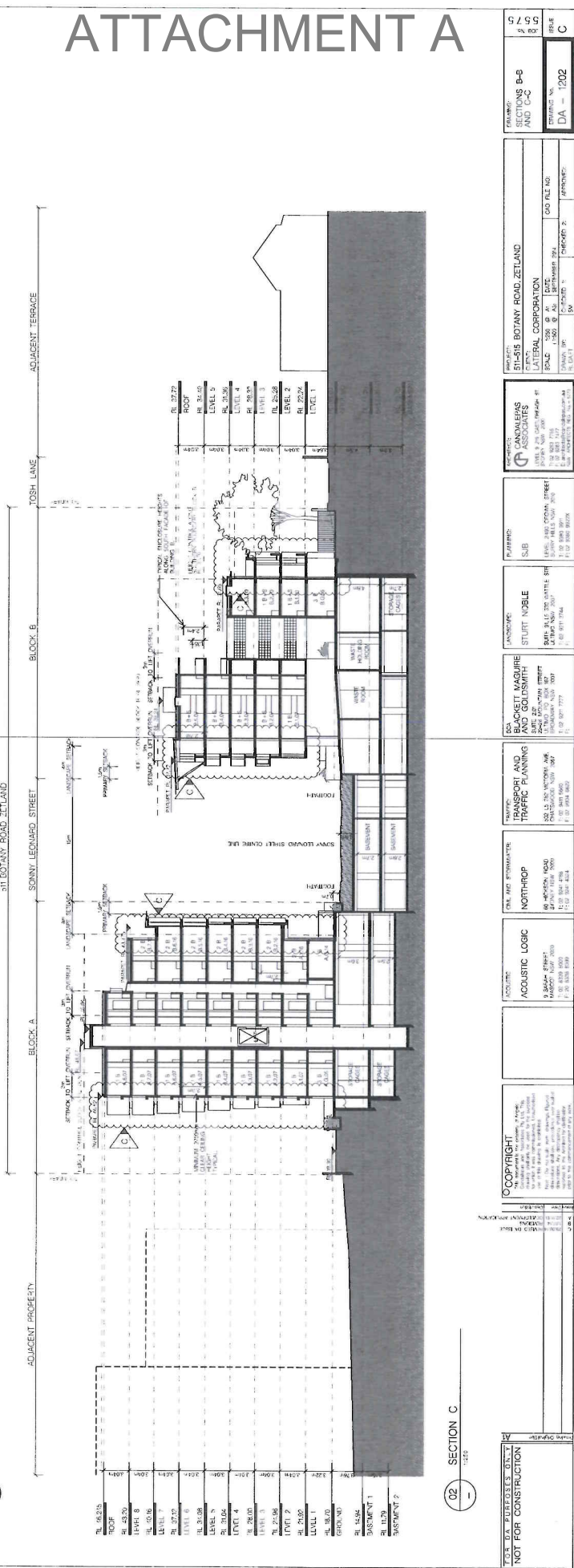
03 SECTION D (BLD B) - PART
1/16" = 1'-0"

DATE: 08/11/2011 SCALE: AS SHOWN DRAWING NO.: DA-1150	PROJECT: LUISIS BOTANY ROAD, ZETLAND LATERAL CORPORATION	DESIGNER: GARDNER WHARF ASSOCIATES LEVEL: 9 2/3" x 11 1/2" x 14 1/2" x 17 1/2" DATE: 08/11/2011 SCALE: AS SHOWN DRAWING NO.: DA-1150	PLANNING: SUB LEVEL: 1/8" = 1'-0" (VERT. DIM.) 1/16" = 1'-0" (HORIZ. DIM.)	LANDSCAPE: STURTT NOBLE SCALE: 1/8" = 1'-0" (VERT. DIM.) 1/16" = 1'-0" (HORIZ. DIM.)	DESIGN: BLACKETT, MACQUE AND GOLDSMITH SCALE: 1/8" = 1'-0" (VERT. DIM.) 1/16" = 1'-0" (HORIZ. DIM.)	TRAINING: PORT AND TRAFFIC PLANNING SCALE: 1/8" = 1'-0" (VERT. DIM.) 1/16" = 1'-0" (HORIZ. DIM.)	ENV. AIR: NORTHROP SCALE: 1/8" = 1'-0" (VERT. DIM.) 1/16" = 1'-0" (HORIZ. DIM.)	ACOUSTIC: ACOUSTIC LOGIC SCALE: 1/8" = 1'-0" (VERT. DIM.) 1/16" = 1'-0" (HORIZ. DIM.)	COPYRIGHT: © 2011 Gardner Wharf Associates, Inc. All rights reserved. No part of this drawing may be reproduced or transmitted in any form or by any means, electronic or mechanical, including photocopying, recording, or by any information storage and retrieval system, without the prior written permission of Gardner Wharf Associates, Inc.	FOR EXAMINATION ONLY NOT FOR CONSTRUCTION	DATE: 08/11/2011	SCALE: AS SHOWN	DRAWING NO.: DA-1150
											PROJECT: LUISIS BOTANY ROAD, ZETLAND LATERAL CORPORATION	DESIGNER: GARDNER WHARF ASSOCIATES LEVEL: 9 2/3" x 11 1/2" x 14 1/2" x 17 1/2" DATE: 08/11/2011 SCALE: AS SHOWN DRAWING NO.: DA-1150	PLANNING: SUB LEVEL: 1/8" = 1'-0" (VERT. DIM.) 1/16" = 1'-0" (HORIZ. DIM.)

ATTACHMENT A



01 SECTION B
1:200



02 SECTION C
1:200

NOT FOR CONSTRUCTION

DATE: 01/20/2015
 DRAWN BY: J. W. WILSON
 CHECKED BY: J. W. WILSON
 APPROVED BY: J. W. WILSON

COOPERIGHT
 No part of this drawing may be reproduced, stored in a retrieval system, or transmitted in any form or by any means, electronic, mechanical, photocopying, recording, or by any information storage and retrieval system, without the prior written permission of the copyright owner.

ACOUSTIC LOGIC
 1000 W. 10TH AVE. SUITE 200
 DENVER, CO 80202
 TEL: 303.733.1111
 FAX: 303.733.1112

NOTHROP
 100 W. 10TH AVE. SUITE 200
 DENVER, CO 80202
 TEL: 303.733.1111
 FAX: 303.733.1112

TRAFFIC REPORT AND TRAFFIC PLANNING
 100 W. 10TH AVE. SUITE 200
 DENVER, CO 80202
 TEL: 303.733.1111
 FAX: 303.733.1112

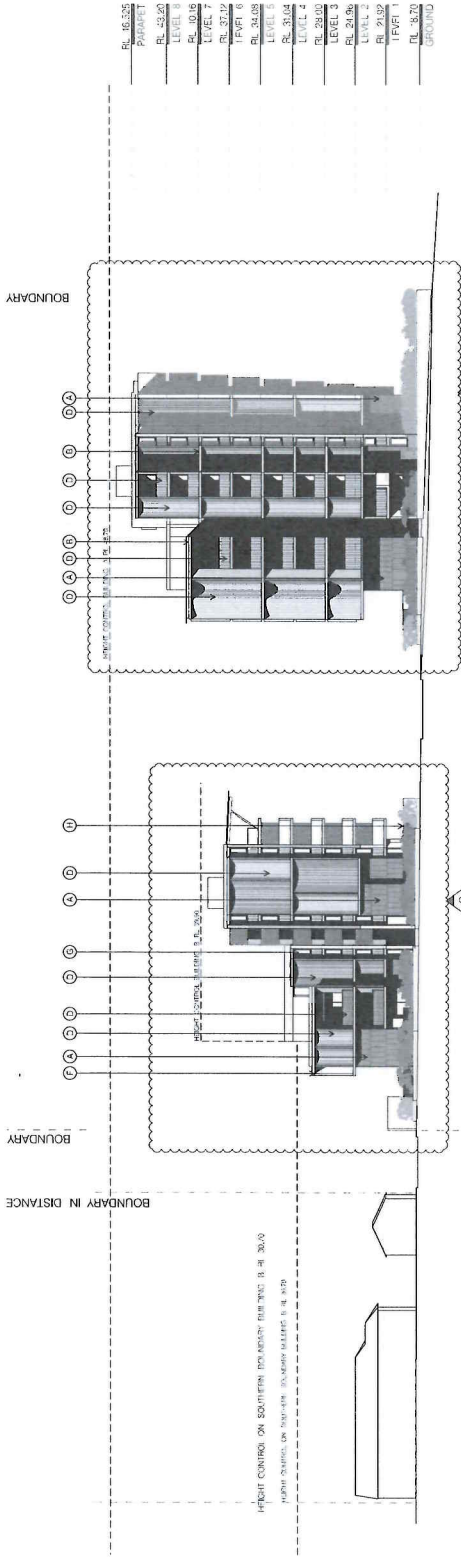
DOUGLASS AND GOLDSMITH
 100 W. 10TH AVE. SUITE 200
 DENVER, CO 80202
 TEL: 303.733.1111
 FAX: 303.733.1112

STURTT NOBLE
 100 W. 10TH AVE. SUITE 200
 DENVER, CO 80202
 TEL: 303.733.1111
 FAX: 303.733.1112

PLANNING
 100 W. 10TH AVE. SUITE 200
 DENVER, CO 80202
 TEL: 303.733.1111
 FAX: 303.733.1112

ENGINEERS ASSOCIATES
 100 W. 10TH AVE. SUITE 200
 DENVER, CO 80202
 TEL: 303.733.1111
 FAX: 303.733.1112

PROJECT: 311 BOTANY ROAD, ZETLAND
CLIENT: LATERAL CORPORATION
SCALE: 1/8" = 1'-0"
DATE: 01/20/2015
PROJECT NO.: 1202
DATE: 01/20/2015
PROJECT NO.: 1202



- RL 37.725 PAVEMENT
- RL 38.400 LEVEL 3
- RL 39.100 LEVEL 4
- RL 39.800 LEVEL 5
- RL 40.500 LEVEL 6
- RL 41.200 LEVEL 7
- RL 41.900 LEVEL 8
- RL 42.600 LEVEL 9
- RL 43.300 LEVEL 10
- RL 44.000 LEVEL 11
- RL 44.700 LEVEL 12
- RL 45.400 LEVEL 13
- RL 46.100 LEVEL 14
- RL 46.800 LEVEL 15
- RL 47.500 LEVEL 16
- RL 48.200 LEVEL 17
- RL 48.900 LEVEL 18
- RL 49.600 LEVEL 19
- RL 50.300 LEVEL 20
- RL 51.000 LEVEL 21
- RL 51.700 LEVEL 22
- RL 52.400 LEVEL 23
- RL 53.100 LEVEL 24
- RL 53.800 LEVEL 25
- RL 54.500 LEVEL 26
- RL 55.200 LEVEL 27
- RL 55.900 LEVEL 28
- RL 56.600 LEVEL 29
- RL 57.300 LEVEL 30
- RL 58.000 LEVEL 31
- RL 58.700 LEVEL 32
- RL 59.400 LEVEL 33
- RL 60.100 LEVEL 34
- RL 60.800 LEVEL 35
- RL 61.500 LEVEL 36
- RL 62.200 LEVEL 37
- RL 62.900 LEVEL 38
- RL 63.600 LEVEL 39
- RL 64.300 LEVEL 40
- RL 65.000 LEVEL 41
- RL 65.700 LEVEL 42
- RL 66.400 LEVEL 43
- RL 67.100 LEVEL 44
- RL 67.800 LEVEL 45
- RL 68.500 LEVEL 46
- RL 69.200 LEVEL 47
- RL 69.900 LEVEL 48
- RL 70.600 LEVEL 49
- RL 71.300 LEVEL 50
- RL 72.000 LEVEL 51
- RL 72.700 LEVEL 52
- RL 73.400 LEVEL 53
- RL 74.100 LEVEL 54
- RL 74.800 LEVEL 55
- RL 75.500 LEVEL 56
- RL 76.200 LEVEL 57
- RL 76.900 LEVEL 58
- RL 77.600 LEVEL 59
- RL 78.300 LEVEL 60
- RL 79.000 LEVEL 61
- RL 79.700 LEVEL 62
- RL 80.400 LEVEL 63
- RL 81.100 LEVEL 64
- RL 81.800 LEVEL 65
- RL 82.500 LEVEL 66
- RL 83.200 LEVEL 67
- RL 83.900 LEVEL 68
- RL 84.600 LEVEL 69
- RL 85.300 LEVEL 70
- RL 86.000 LEVEL 71
- RL 86.700 LEVEL 72
- RL 87.400 LEVEL 73
- RL 88.100 LEVEL 74
- RL 88.800 LEVEL 75
- RL 89.500 LEVEL 76
- RL 90.200 LEVEL 77
- RL 90.900 LEVEL 78
- RL 91.600 LEVEL 79
- RL 92.300 LEVEL 80
- RL 93.000 LEVEL 81
- RL 93.700 LEVEL 82
- RL 94.400 LEVEL 83
- RL 95.100 LEVEL 84
- RL 95.800 LEVEL 85
- RL 96.500 LEVEL 86
- RL 97.200 LEVEL 87
- RL 97.900 LEVEL 88
- RL 98.600 LEVEL 89
- RL 99.300 LEVEL 90
- RL 100.000 LEVEL 91
- RL 100.700 LEVEL 92
- RL 101.400 LEVEL 93
- RL 102.100 LEVEL 94
- RL 102.800 LEVEL 95
- RL 103.500 LEVEL 96
- RL 104.200 LEVEL 97
- RL 104.900 LEVEL 98
- RL 105.600 LEVEL 99
- RL 106.300 LEVEL 100
- RL 107.000 LEVEL 101
- RL 107.700 LEVEL 102
- RL 108.400 LEVEL 103
- RL 109.100 LEVEL 104
- RL 109.800 LEVEL 105
- RL 110.500 LEVEL 106
- RL 111.200 LEVEL 107
- RL 111.900 LEVEL 108
- RL 112.600 LEVEL 109
- RL 113.300 LEVEL 110
- RL 114.000 LEVEL 111
- RL 114.700 LEVEL 112
- RL 115.400 LEVEL 113
- RL 116.100 LEVEL 114
- RL 116.800 LEVEL 115
- RL 117.500 LEVEL 116
- RL 118.200 LEVEL 117
- RL 118.900 LEVEL 118
- RL 119.600 LEVEL 119
- RL 120.300 LEVEL 120
- RL 121.000 LEVEL 121
- RL 121.700 LEVEL 122
- RL 122.400 LEVEL 123
- RL 123.100 LEVEL 124
- RL 123.800 LEVEL 125
- RL 124.500 LEVEL 126
- RL 125.200 LEVEL 127
- RL 125.900 LEVEL 128
- RL 126.600 LEVEL 129
- RL 127.300 LEVEL 130
- RL 128.000 LEVEL 131
- RL 128.700 LEVEL 132
- RL 129.400 LEVEL 133
- RL 130.100 LEVEL 134
- RL 130.800 LEVEL 135
- RL 131.500 LEVEL 136
- RL 132.200 LEVEL 137
- RL 132.900 LEVEL 138
- RL 133.600 LEVEL 139
- RL 134.300 LEVEL 140
- RL 135.000 LEVEL 141
- RL 135.700 LEVEL 142
- RL 136.400 LEVEL 143
- RL 137.100 LEVEL 144
- RL 137.800 LEVEL 145
- RL 138.500 LEVEL 146
- RL 139.200 LEVEL 147
- RL 139.900 LEVEL 148
- RL 140.600 LEVEL 149
- RL 141.300 LEVEL 150
- RL 142.000 LEVEL 151
- RL 142.700 LEVEL 152
- RL 143.400 LEVEL 153
- RL 144.100 LEVEL 154
- RL 144.800 LEVEL 155
- RL 145.500 LEVEL 156
- RL 146.200 LEVEL 157
- RL 146.900 LEVEL 158
- RL 147.600 LEVEL 159
- RL 148.300 LEVEL 160
- RL 149.000 LEVEL 161
- RL 149.700 LEVEL 162
- RL 150.400 LEVEL 163
- RL 151.100 LEVEL 164
- RL 151.800 LEVEL 165
- RL 152.500 LEVEL 166
- RL 153.200 LEVEL 167
- RL 153.900 LEVEL 168
- RL 154.600 LEVEL 169
- RL 155.300 LEVEL 170
- RL 156.000 LEVEL 171
- RL 156.700 LEVEL 172
- RL 157.400 LEVEL 173
- RL 158.100 LEVEL 174
- RL 158.800 LEVEL 175
- RL 159.500 LEVEL 176
- RL 160.200 LEVEL 177
- RL 160.900 LEVEL 178
- RL 161.600 LEVEL 179
- RL 162.300 LEVEL 180
- RL 163.000 LEVEL 181
- RL 163.700 LEVEL 182
- RL 164.400 LEVEL 183
- RL 165.100 LEVEL 184
- RL 165.800 LEVEL 185
- RL 166.500 LEVEL 186
- RL 167.200 LEVEL 187
- RL 167.900 LEVEL 188
- RL 168.600 LEVEL 189
- RL 169.300 LEVEL 190
- RL 170.000 LEVEL 191
- RL 170.700 LEVEL 192
- RL 171.400 LEVEL 193
- RL 172.100 LEVEL 194
- RL 172.800 LEVEL 195
- RL 173.500 LEVEL 196
- RL 174.200 LEVEL 197
- RL 174.900 LEVEL 198
- RL 175.600 LEVEL 199
- RL 176.300 LEVEL 200
- RL 177.000 LEVEL 201
- RL 177.700 LEVEL 202
- RL 178.400 LEVEL 203
- RL 179.100 LEVEL 204
- RL 179.800 LEVEL 205
- RL 180.500 LEVEL 206
- RL 181.200 LEVEL 207
- RL 181.900 LEVEL 208
- RL 182.600 LEVEL 209
- RL 183.300 LEVEL 210
- RL 184.000 LEVEL 211
- RL 184.700 LEVEL 212
- RL 185.400 LEVEL 213
- RL 186.100 LEVEL 214
- RL 186.800 LEVEL 215
- RL 187.500 LEVEL 216
- RL 188.200 LEVEL 217
- RL 188.900 LEVEL 218
- RL 189.600 LEVEL 219
- RL 190.300 LEVEL 220
- RL 191.000 LEVEL 221
- RL 191.700 LEVEL 222
- RL 192.400 LEVEL 223
- RL 193.100 LEVEL 224
- RL 193.800 LEVEL 225
- RL 194.500 LEVEL 226
- RL 195.200 LEVEL 227
- RL 195.900 LEVEL 228
- RL 196.600 LEVEL 229
- RL 197.300 LEVEL 230
- RL 198.000 LEVEL 231
- RL 198.700 LEVEL 232
- RL 199.400 LEVEL 233
- RL 200.100 LEVEL 234
- RL 200.800 LEVEL 235
- RL 201.500 LEVEL 236
- RL 202.200 LEVEL 237
- RL 202.900 LEVEL 238
- RL 203.600 LEVEL 239
- RL 204.300 LEVEL 240
- RL 205.000 LEVEL 241
- RL 205.700 LEVEL 242
- RL 206.400 LEVEL 243
- RL 207.100 LEVEL 244
- RL 207.800 LEVEL 245
- RL 208.500 LEVEL 246
- RL 209.200 LEVEL 247
- RL 209.900 LEVEL 248
- RL 210.600 LEVEL 249
- RL 211.300 LEVEL 250
- RL 212.000 LEVEL 251
- RL 212.700 LEVEL 252
- RL 213.400 LEVEL 253
- RL 214.100 LEVEL 254
- RL 214.800 LEVEL 255
- RL 215.500 LEVEL 256
- RL 216.200 LEVEL 257
- RL 216.900 LEVEL 258
- RL 217.600 LEVEL 259
- RL 218.300 LEVEL 260
- RL 219.000 LEVEL 261
- RL 219.700 LEVEL 262
- RL 220.400 LEVEL 263
- RL 221.100 LEVEL 264
- RL 221.800 LEVEL 265
- RL 222.500 LEVEL 266
- RL 223.200 LEVEL 267
- RL 223.900 LEVEL 268
- RL 224.600 LEVEL 269
- RL 225.300 LEVEL 270
- RL 226.000 LEVEL 271
- RL 226.700 LEVEL 272
- RL 227.400 LEVEL 273
- RL 228.100 LEVEL 274
- RL 228.800 LEVEL 275
- RL 229.500 LEVEL 276
- RL 230.200 LEVEL 277
- RL 230.900 LEVEL 278
- RL 231.600 LEVEL 279
- RL 232.300 LEVEL 280
- RL 233.000 LEVEL 281
- RL 233.700 LEVEL 282
- RL 234.400 LEVEL 283
- RL 235.100 LEVEL 284
- RL 235.800 LEVEL 285
- RL 236.500 LEVEL 286
- RL 237.200 LEVEL 287
- RL 237.900 LEVEL 288
- RL 238.600 LEVEL 289
- RL 239.300 LEVEL 290
- RL 240.000 LEVEL 291
- RL 240.700 LEVEL 292
- RL 241.400 LEVEL 293
- RL 242.100 LEVEL 294
- RL 242.800 LEVEL 295
- RL 243.500 LEVEL 296
- RL 244.200 LEVEL 297
- RL 244.900 LEVEL 298
- RL 245.600 LEVEL 299
- RL 246.300 LEVEL 300
- RL 247.000 LEVEL 301
- RL 247.700 LEVEL 302
- RL 248.400 LEVEL 303
- RL 249.100 LEVEL 304
- RL 249.800 LEVEL 305
- RL 250.500 LEVEL 306
- RL 251.200 LEVEL 307
- RL 251.900 LEVEL 308
- RL 252.600 LEVEL 309
- RL 253.300 LEVEL 310
- RL 254.000 LEVEL 311
- RL 254.700 LEVEL 312
- RL 255.400 LEVEL 313
- RL 256.100 LEVEL 314
- RL 256.800 LEVEL 315
- RL 257.500 LEVEL 316
- RL 258.200 LEVEL 317
- RL 258.900 LEVEL 318
- RL 259.600 LEVEL 319
- RL 260.300 LEVEL 320
- RL 261.000 LEVEL 321
- RL 261.700 LEVEL 322
- RL 262.400 LEVEL 323
- RL 263.100 LEVEL 324
- RL 263.800 LEVEL 325
- RL 264.500 LEVEL 326
- RL 265.200 LEVEL 327
- RL 265.900 LEVEL 328
- RL 266.600 LEVEL 329
- RL 267.300 LEVEL 330
- RL 268.000 LEVEL 331
- RL 268.700 LEVEL 332
- RL 269.400 LEVEL 333
- RL 270.100 LEVEL 334
- RL 270.800 LEVEL 335
- RL 271.500 LEVEL 336
- RL 272.200 LEVEL 337
- RL 272.900 LEVEL 338
- RL 273.600 LEVEL 339
- RL 274.300 LEVEL 340
- RL 275.000 LEVEL 341
- RL 275.700 LEVEL 342
- RL 276.400 LEVEL 343
- RL 277.100 LEVEL 344
- RL 277.800 LEVEL 345
- RL 278.500 LEVEL 346
- RL 279.200 LEVEL 347
- RL 279.900 LEVEL 348
- RL 280.600 LEVEL 349
- RL 281.300 LEVEL 350
- RL 282.000 LEVEL 351
- RL 282.700 LEVEL 352
- RL 283.400 LEVEL 353
- RL 284.100 LEVEL 354
- RL 284.800 LEVEL 355
- RL 285.500 LEVEL 356
- RL 286.200 LEVEL 357
- RL 286.900 LEVEL 358
- RL 287.600 LEVEL 359
- RL 288.300 LEVEL 360
- RL 289.000 LEVEL 361
- RL 289.700 LEVEL 362
- RL 290.400 LEVEL 363
- RL 291.100 LEVEL 364
- RL 291.800 LEVEL 365
- RL 292.500 LEVEL 366
- RL 293.200 LEVEL 367
- RL 293.900 LEVEL 368
- RL 294.600 LEVEL 369
- RL 295.300 LEVEL 370
- RL 296.000 LEVEL 371
- RL 296.700 LEVEL 372
- RL 297.400 LEVEL 373
- RL 298.100 LEVEL 374
- RL 298.800 LEVEL 375
- RL 299.500 LEVEL 376
- RL 300.200 LEVEL 377
- RL 300.900 LEVEL 378
- RL 301.600 LEVEL 379
- RL 302.300 LEVEL 380
- RL 303.000 LEVEL 381
- RL 303.700 LEVEL 382
- RL 304.400 LEVEL 383
- RL 305.100 LEVEL 384
- RL 305.800 LEVEL 385
- RL 306.500 LEVEL 386
- RL 307.200 LEVEL 387
- RL 307.900 LEVEL 388
- RL 308.600 LEVEL 389
- RL 309.300 LEVEL 390
- RL 310.000 LEVEL 391
- RL 310.700 LEVEL 392
- RL 311.400 LEVEL 393
- RL 312.100 LEVEL 394
- RL 312.800 LEVEL 395
- RL 313.500 LEVEL 396
- RL 314.200 LEVEL 397
- RL 314.900 LEVEL 398
- RL 315.600 LEVEL 399
- RL 316.300 LEVEL 400
- RL 317.000 LEVEL 401
- RL 317.700 LEVEL 402
- RL 318.400 LEVEL 403
- RL 319.100 LEVEL 404
- RL 319.800 LEVEL 405
- RL 320.500 LEVEL 406
- RL 321.200 LEVEL 407
- RL 321.900 LEVEL 408
- RL 322.600 LEVEL 409
- RL 323.300 LEVEL 410
- RL 324.000 LEVEL 411
- RL 324.700 LEVEL 412
- RL 325.400 LEVEL 413
- RL 326.100 LEVEL 414
- RL 326.800 LEVEL 415
- RL 327.500 LEVEL 416
- RL 328.200 LEVEL 417
- RL 328.900 LEVEL 418
- RL 329.600 LEVEL 419
- RL 330.300 LEVEL 420
- RL 331.000 LEVEL 421
- RL 331.700 LEVEL 422
- RL 332.400 LEVEL 423
- RL 333.100 LEVEL 424
- RL 333.800 LEVEL 425
- RL 334.500 LEVEL 426
- RL 335.200 LEVEL 427
- RL 335.900 LEVEL 428
- RL 336.600 LEVEL 429
- RL 337.300 LEVEL 430
- RL 338.000 LEVEL 431
- RL 338.700 LEVEL 432
- RL 339.400 LEVEL 433
- RL 340.100 LEVEL 434
- RL 340.800 LEVEL 435
- RL 341.500 LEVEL 436
- RL 342.200 LEVEL 437
- RL 342.900 LEVEL 438
- RL 343.600 LEVEL 439
- RL 344.300 LEVEL 440
- RL 345.000 LEVEL 441
- RL 345.700 LEVEL 442
- RL 346.400 LEVEL 443
- RL 347.100 LEVEL 444
- RL 347.800 LEVEL 445
- RL 348.500 LEVEL 446
- RL 349.200 LEVEL 447
- RL 349.900 LEVEL 448
- RL 350.600 LEVEL 449
- RL 351.300 LEVEL 450
- RL 352.000 LEVEL 451
- RL 352.700 LEVEL 452
- RL 353.400 LEVEL 453
- RL 354.100 LEVEL 454
- RL 354.800 LEVEL 455
- RL 355.500 LEVEL 456
- RL 356.200 LEVEL 457
- RL 356.900 LEVEL 458
- RL 357.600 LEVEL 459
- RL 358.300 LEVEL 460
- RL 359.000 LEVEL 461
- RL 359.700 LEVEL 462
- RL 360.400 LEVEL 463
- RL 361.100 LEVEL 464
- RL 361.800 LEVEL 465
- RL 362.500 LEVEL 466
- RL 363.200 LEVEL 467
- RL 363.900 LEVEL 468
- RL 364.600 LEVEL 469
- RL 365.300 LEVEL 470
- RL 366.000 LEVEL 471
- RL 366.700 LEVEL 472
- RL 367.400 LEVEL 473
- RL 368.100 LEVEL 474
- RL 368.800 LEVEL 475
- RL 369.500 LEVEL 476
- RL 370.200 LEVEL 477
- RL 370.900 LEVEL 478
- RL 371.600 LEVEL 479
- RL 372.300 LEVEL 480
- RL 373.000 LEVEL 481
- RL 373.700 LEVEL 482
- RL 374.400 LEVEL 483
- RL 375.100 LEVEL 484
- RL 375.800 LEVEL 485
- RL 376.500 LEVEL 486
- RL 377.200 LEVEL 487
- RL 377.900 LEVEL 488
- RL 378.600 LEVEL 489
- RL 379.300 LEVEL 490
- RL 380.000 LEVEL 491
- RL 380.700 LEVEL 492
- RL 381.400 LEVEL 493
- RL 382.100 LEVEL 494
- RL 382.800 LEVEL 495
- RL 383.500 LEVEL 496
- RL 384.200 LEVEL 497
- RL 384.900 LEVEL 498
- RL 385.600 LEVEL 499
- RL 386.300 LEVEL 500
- RL 387.000 LEVEL 501
- RL 387.700 LEVEL 502
- RL 388.400 LEVEL 503
- RL 389.100 LEVEL 504
- RL 389.800 LEVEL 505
- RL 390.500 LEVEL 506
- RL 391.200 LEVEL 507
- RL 391.900 LEVEL 508
- RL 392.600 LEVEL 509
- RL 393.300 LEVEL 510
- RL 394.000 LEVEL 511
- RL 394.700 LEVEL 512
- RL 395.400 LEVEL 513
- RL 396.100 LEVEL 514
- RL 396.800 LEVEL 515
- RL 397.500 LEVEL 516
- RL 398.200 LEVEL 517
- RL 398.900 LEVEL 518
- RL 399.600 LEVEL 519
- RL 400.300 LEVEL 520
- RL 401.000 LEVEL 521
- RL 401.700 LEVEL 522
- RL 402.400 LEVEL 523
- RL 403.100 LEVEL 524
- RL 403.800 LEVEL 525
- RL 404.500 LEVEL 526
- RL 405.200 LEVEL 527
- RL 405.900 LEVEL 528
- RL 406.600 LEVEL 529
- RL 407.300 LEVEL 530
- RL 408.000 LEVEL 531
- RL 408.700 LEVEL 532
- RL 409.400 LEVEL 533
- RL 410.100 LEVEL 534
- RL 410.800 LEVEL 535
- RL 411.500 LEVEL 536
- RL 412.200 LEVEL 537
- RL 412.900 LEVEL 538
- RL 413.600 LEVEL 539
- RL 414.300 LEVEL 540
- RL 415.000 LEVEL 541
- RL 415.700 LEVEL 542
- RL 416.400 LEVEL 543
- RL 417.100 LEVEL 544
- RL 417.800 LEVEL 545
- RL 418.500 LEVEL 546
- RL 419.200 LEVEL 547
- RL 419.900 LEVEL 548
- RL 420.600 LEVEL 549
- RL 421.300 LEVEL 550
- RL 422.000 LEVEL 551
- RL 422.700 LEVEL 552
- RL 423.400 LEVEL 553
- RL 424.100 LEVEL 554
- RL 424.800 LEVEL 555
- RL 425.500 LEVEL 556
- RL 426.200 LEVEL 557
- RL 426.900 LEVEL 558
- RL 427.600 LEVEL 559
- RL 428.300 LEVEL 560
- RL 429.000 LEVEL 561
- RL 429.700 LEVEL 562
- RL 430.400 LEVEL 563
- RL 431.100 LEVEL 564
- RL 431.800 LEVEL 565
- RL 432.500 LEVEL 566
- RL 433.200 LEVEL 567
- RL 433.900 LEVEL 568
- RL 434.600 LEVEL 569
- RL 435.300 LEVEL 570
- RL 436.000 LEVEL 571
- RL 436.700 LEVEL 572
- RL 437.400 LEVEL 573
- RL 438.100 LEVEL 574
- RL 438.800 LEVEL 575
- RL 439.500 LEVEL 576
- RL 440.200 LEVEL 577
- RL 440.900 LEVEL 578
- RL 441.600 LEVEL 579
- RL 442.300 LEVEL 580
- RL 443.000 LEVEL 581
- RL 443.700 LEVEL 582
- RL 444.400 LEVEL 583
- RL 445.100 LEVEL 584
- RL 445.800 LEVEL 585
- RL 446.500 LEVEL 586
- RL 447.200 LEVEL 587
- RL 447.900 LEVEL 588
- RL 448.600 LEVEL 589
- RL 449.300 LEVEL 590
- RL 450.000 LEVEL 591
- RL 450.700 LEVEL 592
- RL 451.400 LEVEL 593
- RL 452.100 LEVEL 594
- RL 452.800 LEVEL 595
- RL 453.500 LEVEL 596
- RL 454.200 LEVEL 597
- RL 454.900 LEVEL 598
- RL 455.600 LEVEL 599
- RL 456.300 LEVEL 600
- RL 457.000 LEVEL 601
- RL 457.700 LEVEL 602
- RL 458.400 LEVEL 603
- RL 459.100 LEVEL 604
- RL 459.800 LEVEL 605
- RL 460.500 LEVEL 606
- RL 461.200 LEVEL 607
- RL 461.900 LEVEL 608
- RL 462.600 LEVEL 609
- RL 463.300 LEVEL 610
- RL 464.000 LEVEL 611
- RL 464.700 LEVEL 612
- RL 465.400 LEVEL 613
- RL 466.100 LEVEL 614
- RL 466.800 LEVEL 615
- RL 467.500 LEVEL 616
- RL 468.200 LEVEL 617
- RL 468.900 LEVEL 618
- RL 469.600 LEVEL 619
- RL 470.300 LEVEL 620
- RL

